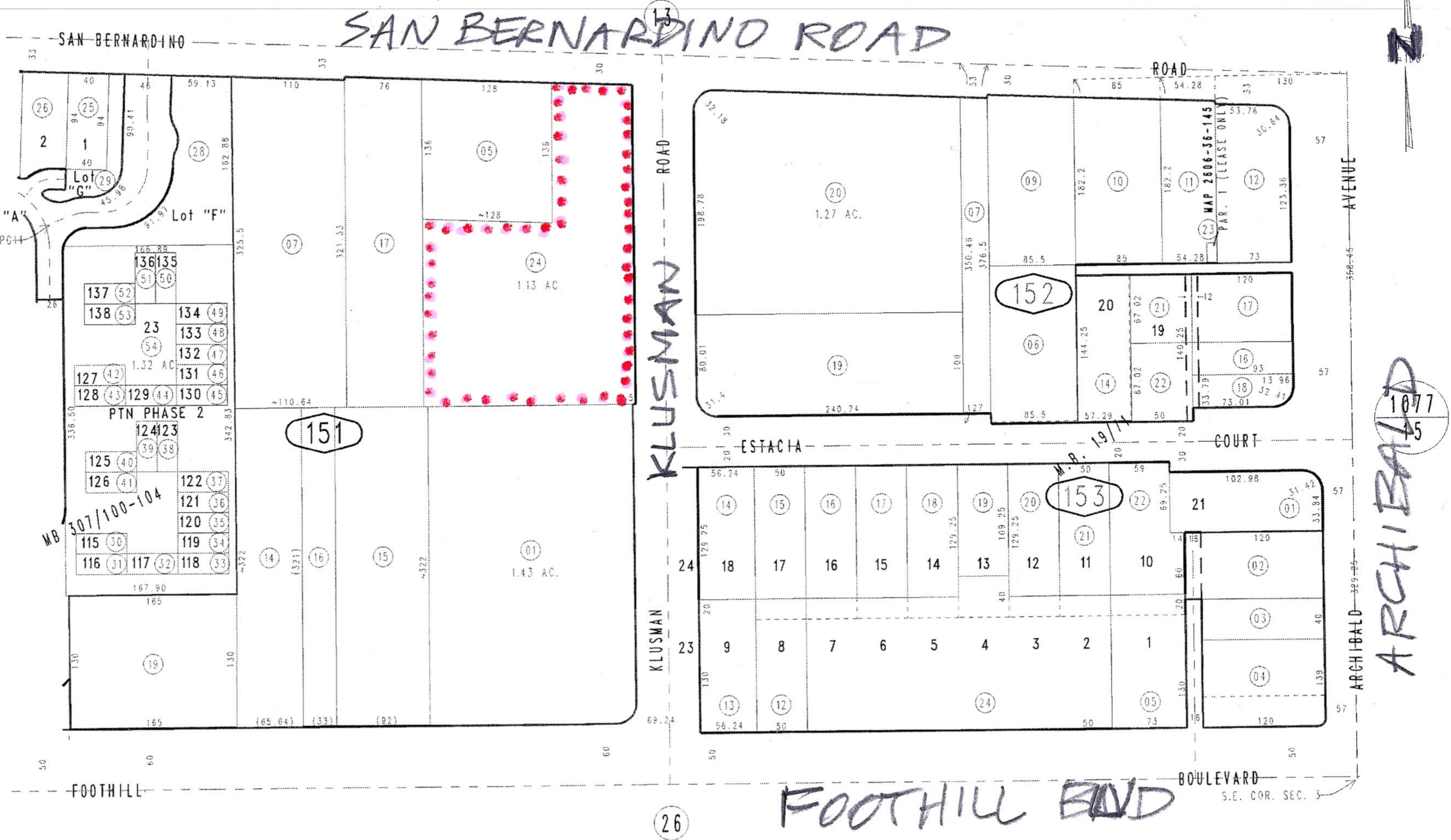


CUCAMONGA  
CHINATOWN HOUSE

THIS MAP IS FOR THE PURPOSE  
OF AD VALOREM TAXATION ONLY.

Ptn. S.E.1/4 Sec.3, T.1S.,R.7W., S.B.B.&M.

City of Rancho Cucamonga 0208-15  
Tax Rate Area  
15049



August 2004

Ptn. Tract No. 16567, M.B. 307/100-104, Condo Plan 06-0157434, Ptn Phase 2  
Lucas & Word Sub., M.B. 19/71

Assessor's Map  
Book 0208 Page 15  
San Bernardino County

REVISED  
10/05/09 GL